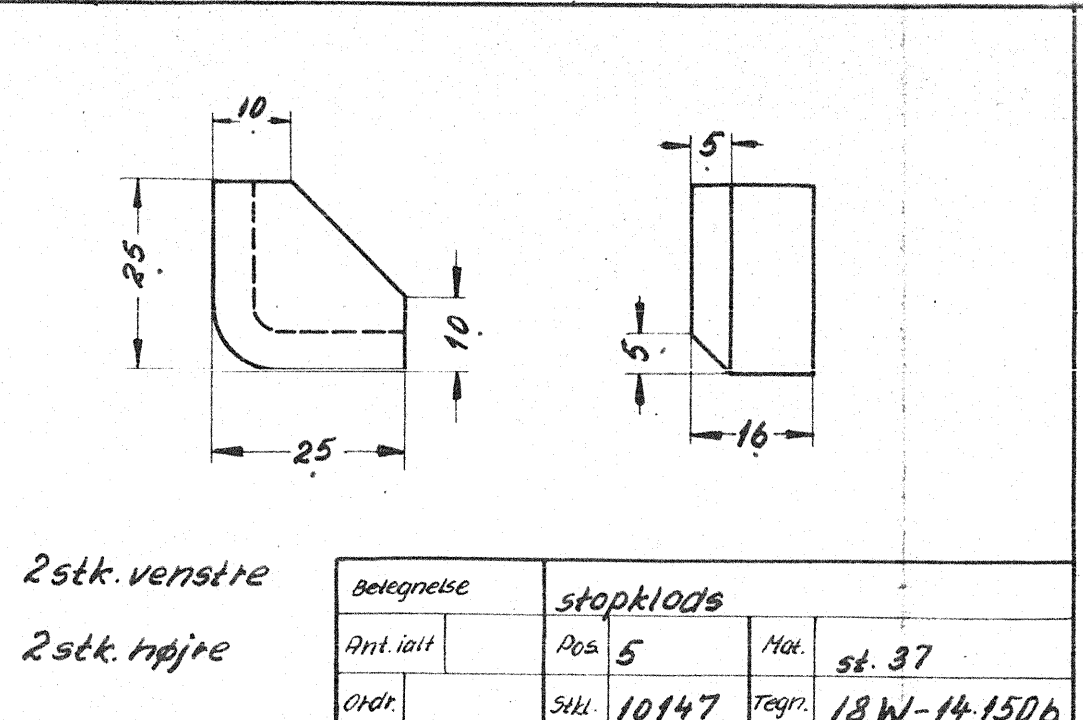
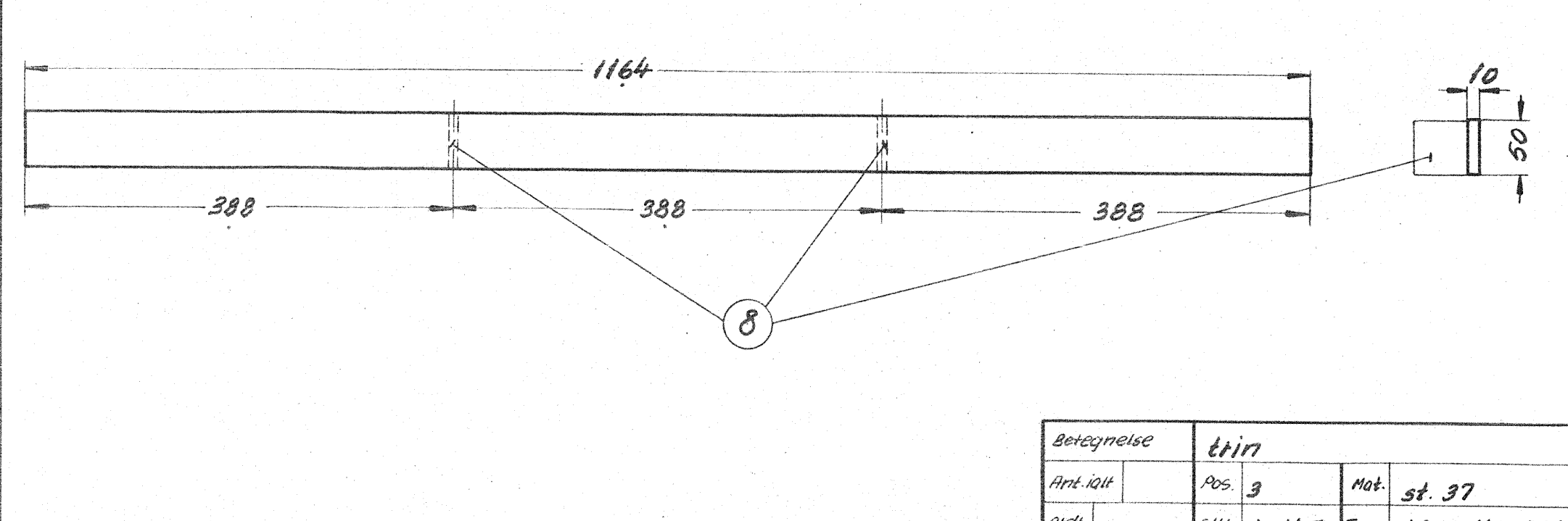


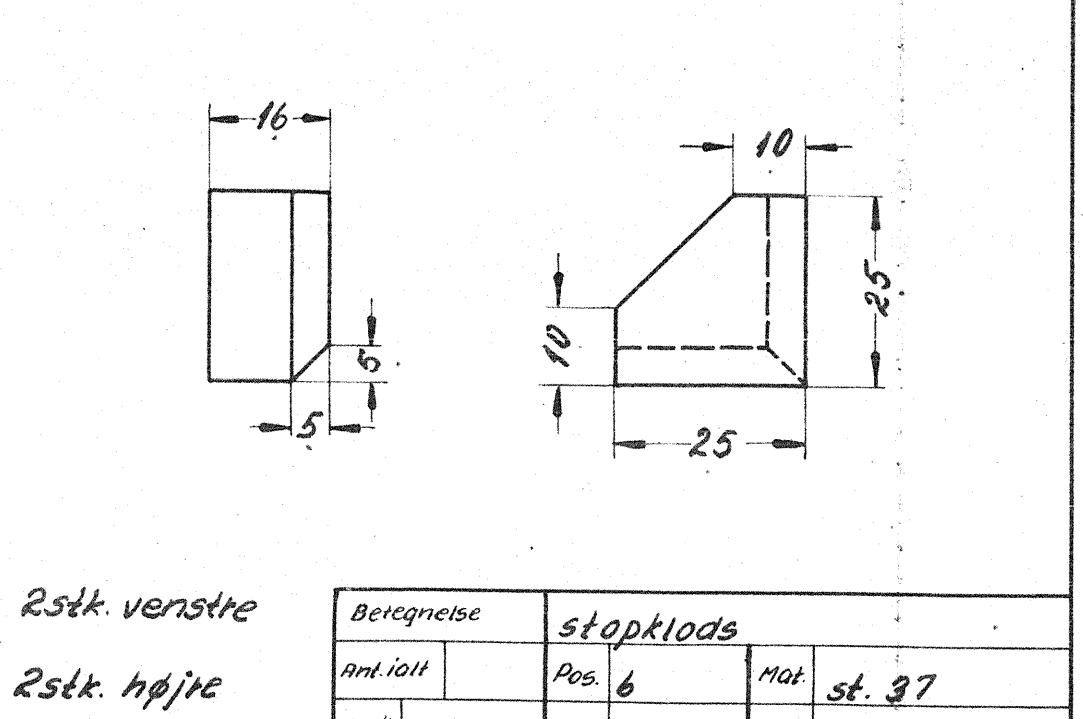
betegnelse	trin
Ant. i alt.	Pos. 2
Mat.	st. 37
Stk.	10147
Tegn.	18W-14.150b



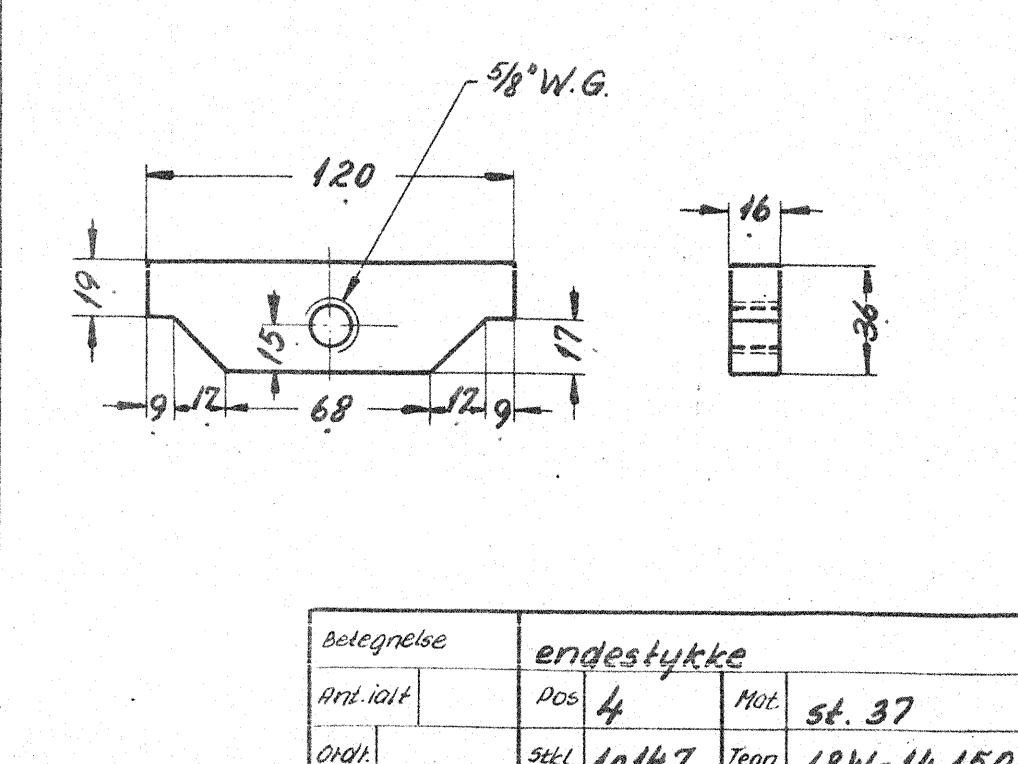
betegnelse	stopklods
Ant. i alt.	Pos. 5
Mat.	st. 37
Stk.	10147
Tegn.	18W-14.150b



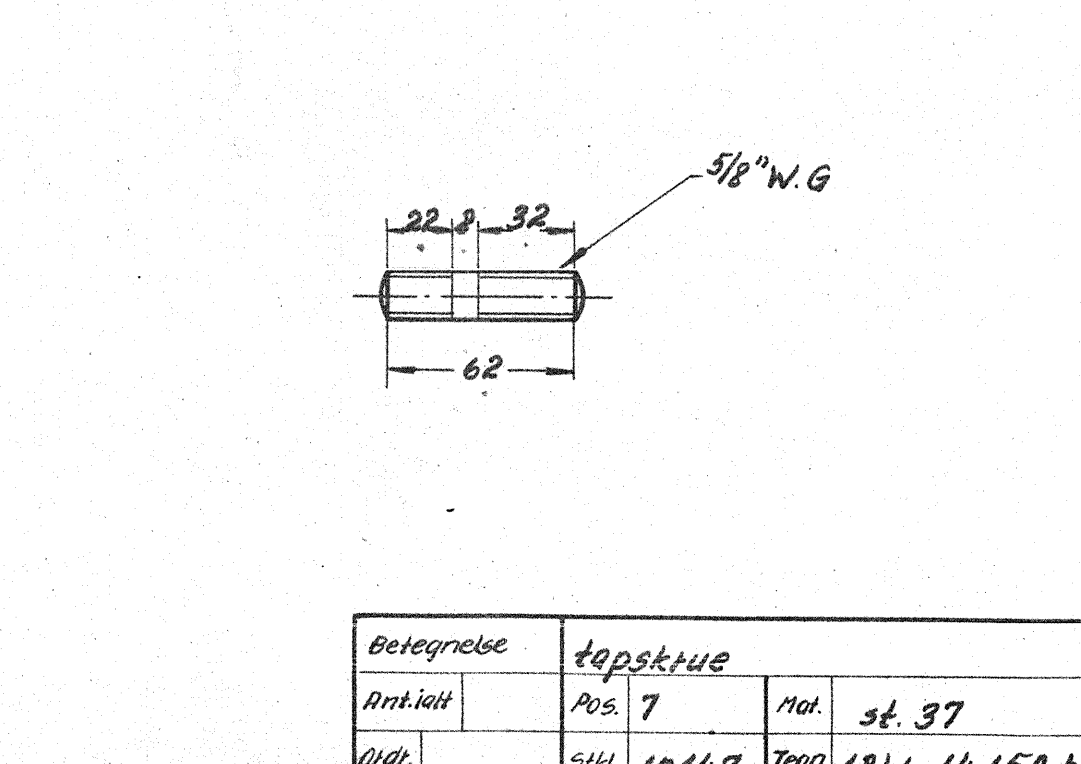
betegnelse	trin
Ant. i alt.	Pos. 3
Mat.	st. 37
Stk.	10147
Tegn.	18W-14.150b



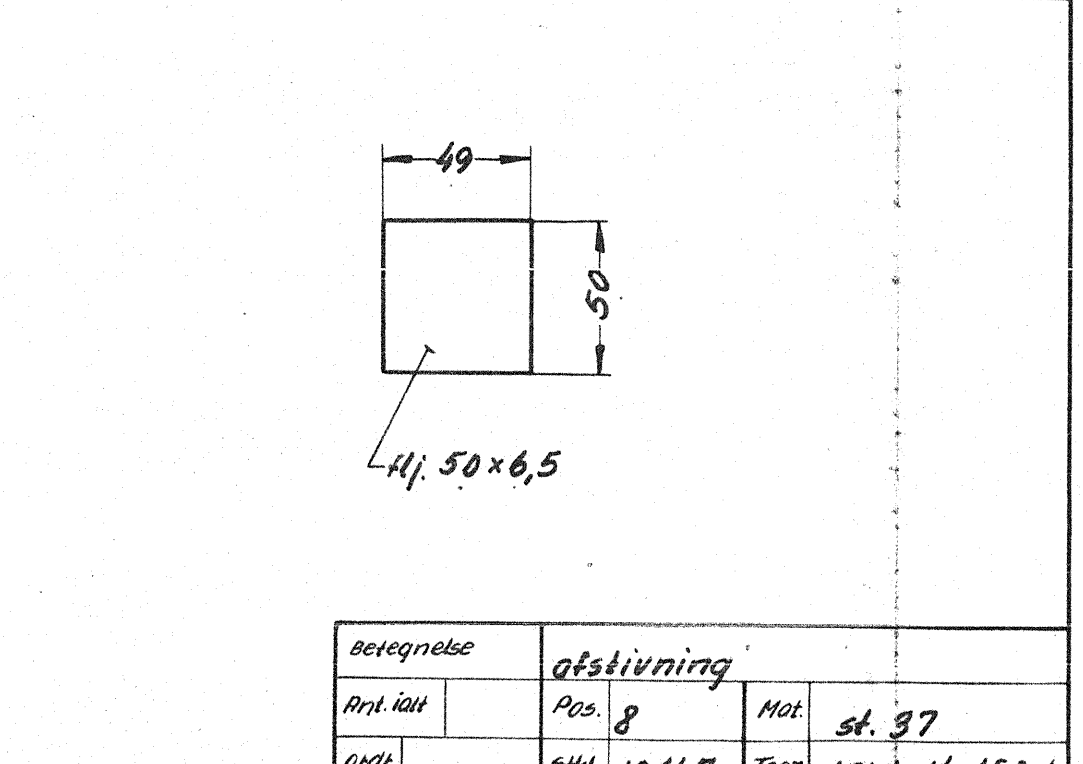
betegnelse	stopklods
Ant. i alt.	Pos. 6
Mat.	st. 37
Stk.	10147
Tegn.	18W-14.150b



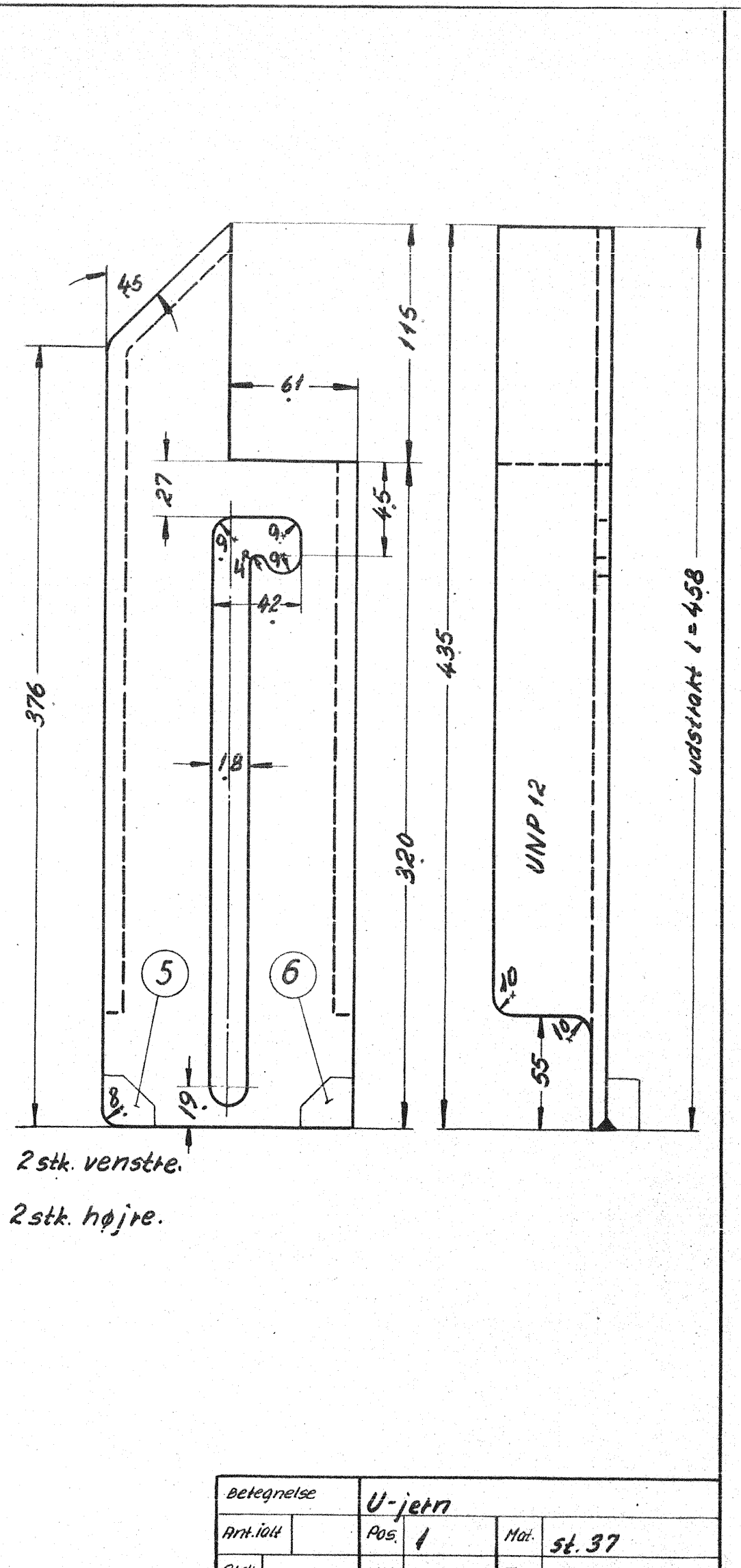
betegnelse	endestykke
Ant. i alt.	Pos. 4
Mat.	st. 37
Stk.	10147
Tegn.	18W-14.150b



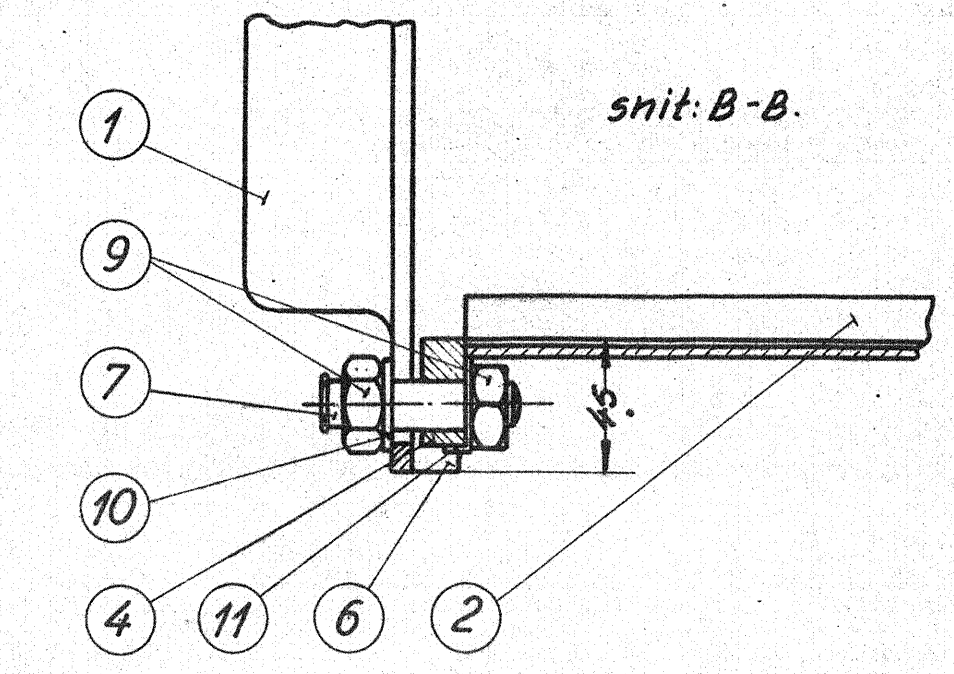
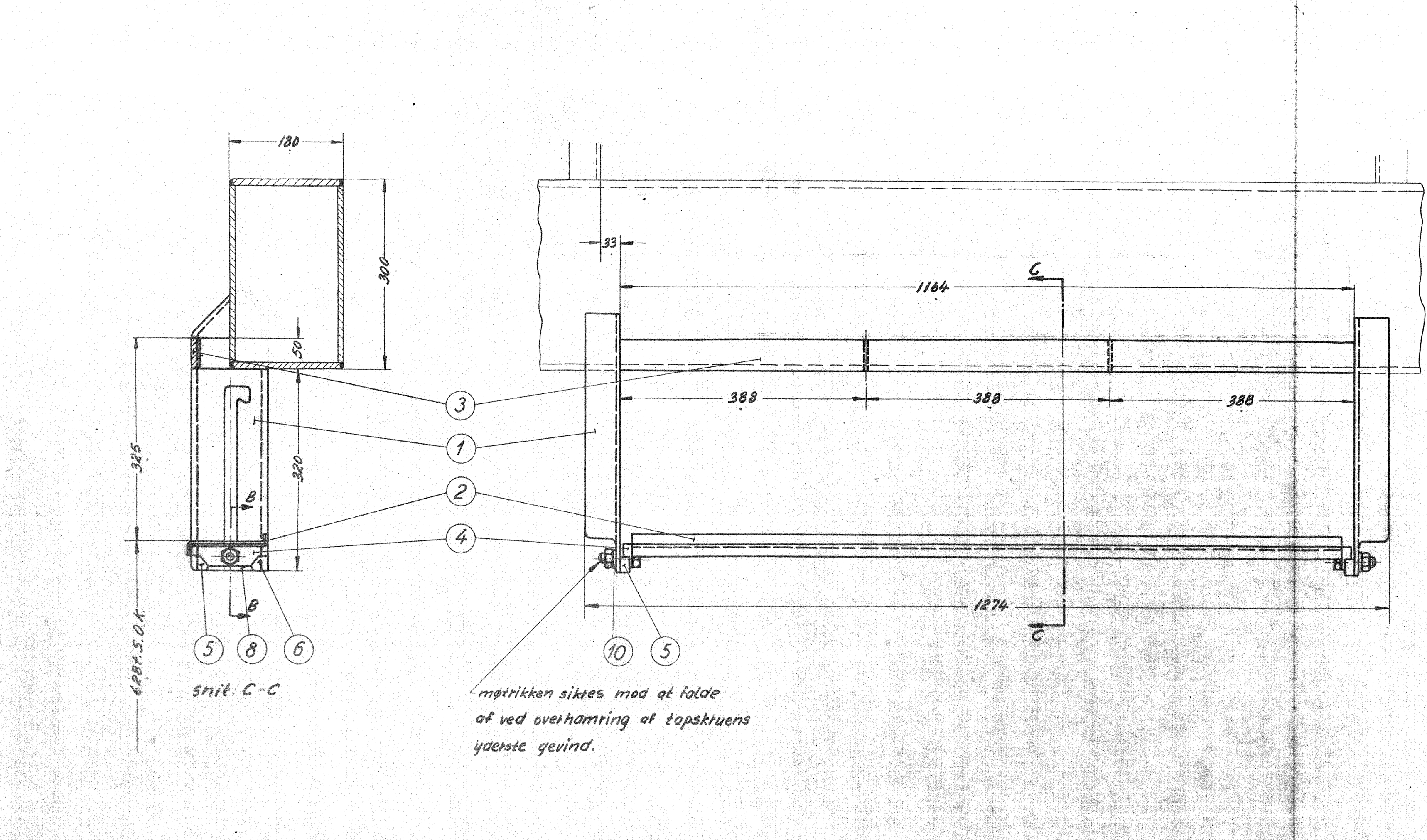
betegnelse	topsktue
Ant. i alt.	Pos. 7
Mat.	st. 37
Stk.	10147
Tegn.	18W-14.150b



betegnelse	afstivning
Ant. i alt.	Pos. 8
Mat.	st. 37
Stk.	10147
Tegn.	18W-14.150b



betegnelse	U-jern
Ant. i alt.	Pos. 1
Mat.	st. 37
Stk.	10147
Tegn.	18W-14.150b



Original

vægt pr. vogn: 41,4 kg

4	sikingsblik 5/8"	11	st. 34	magasin	
4	spændeskive 5/8"	10	"	"	
8	sort møtrik m. 6kt. 5/8"	9	st. 34	magasin	
4	afstivning	8	st. 37	Hj. 50x6,5x240	0,1
4	topsktue 5/8"x62	7	blank stål	16F=300	0,1
4	stopklods	6	st. 37	Hj. 25x16x120	0,1
4	stopklods	5	"	Hj. 25x16x120	0,1
4	endestykke	4	"	170x130x16	0,5
2	trin	3	"	Hj. 50x10x2250	4,6
2	trin	2	"	3/5 rippelplade 1140x330	5,0
4	U-jern NP12	1	st. 37	UNP 12x1880	4,4
Stk.	betegnelse	Pos.	Materiale	Model nr. eller materiale afmærkning	nr. færdig vægt/stk.
Tegn.	H.M.P. 25/51	Rev.	E.P. 30/51	Afd.	ITL
Købt.	G.M. 29-6-51	Norm.		Dato	
Dato		Retelse		Model	
ny tegn.	H.M.P.			b	
25/51	Pos. 12 og 15	tilføjet		c	
Anvendelse				Sikingsnr.	
Diesel-el 500/550hk. motorvogn.				10147	
Tegningens betegnelse				Tegningens nummer	
Trin ved bagagerum.				18W-14.150.	
Indlæs				b	

FRICHS